



ASTM uPVC Schedule 80



Schedule 80 Pipes

Standards & Quality

- Sch. 80 pipe is manufactured to comply with NSF Standard 61, CSA B 137.3 and ASTM D1785, consistently meeting the Quality Assurance test requirements of the standard with regards to burst pressure, flattening and extrusion quality.



Applications

- Sch. 80 pipe is resistant to most acids, alkalis, salts, fats, oxidants and halogens. However, Sch. 80 pipe should not be used with ester, ketones, ethers and aromatic or chlorinated hydrocarbons.
- Typical applications include:
 - chemical processing
 - agricultural
 - potable water
 - treated and untreated effluent
 - cooling water
 - irrigation

Temperature Consideration

- Being a thermoplastic material, Sch. 80 pipe will display variations in its physical properties as the temperature changes. As the temperature falls, the pipe's stiffness and tensile strength increase, thereby increasing the pipe's pressure capacity. Conversely, as the operating temperature rises, the pipe decreases in stiffness and tensile strength; consequently, the pressure capacity of the pipe will be reduced. With the drop in temperature, Sch. 80 pipe decreases in impact strength and becomes less ductile. As the temperature rises, the impact strength and flexibility of the pipe increase.

❖ Thermal Linear Expansion

Sch. 80 pipe expands and contracts with change in temperature. The coefficient of thermal expansion is 7×10^{-5} mm/mm/°C. This is equivalent to 7mm change in length for every 10 meters for every 10°C change in temperature.

❖ Pressure De-rating Factor

The pressure ratings given are for operating temperature of water at 73°F (23°C). For operating temperature above 73°F (23°C), the working pressure has to be de-rated by multiplying the working pressure of the selected pipe at 73°F (23°C), by the appropriate de-rating factor to determine the maximum permissible working pressure of the pipes at the elevated temperature chosen. Nevertheless, Sch. 80 pipe should not be used at temperature in excess of 140°F (60°C).

OPERATING F°	TEMP C°	DE-RATING FACTOR
73	23	1.00
80	26	0.88
90	32	0.76
100	38	0.64
110	43	0.54
120	49	0.42
130	54	0.32
140	60	0.20

Schedule 80 Pipes (Plain Ended)

Pipes Dimensions & Working Pressures

PRODUCT CODE	NOMINAL DIAMETER		PIPE LENGTH L (M)	OUTSIDE DIAMETER		WALL THICKNESS		MAX WORKING PRESS	
	(in)	(mm)		(in)	(mm)	(in)	(mm)	(psi)	(MPa)
1100 015 60 80	½	15	6.0	0.836 - 0.844	21.2 - 21.4	0.147 - 0.167	3.7 - 4.2	850	5.86
1100 020 60 80	¾	20	6.0	1.046 - 1.054	26.6 - 26.8	0.154 - 0.17	3.9 - 4.4	690	4.76
1100 025 60 80	1	25	6.0	1.310 - 1.320	33.3 - 33.5	0.179 - 0.200	4.6 - 5.1	630	4.34
1100 032 60 80	1¼	32	6.0	1.655 - 1.665	42.0 - 42.3	0.191 - 0.214	4.9 - 5.4	520	3.59
1100 040 60 80	1½	40	6.0	1.894 - 1.906	48.1 - 48.4	0.200 - 0.224	5.1 - 5.7	470	3.24
1100 050 60 80	2	50	6.0	2.369 - 2.381	60.2 - 60.5	0.218 - 0.244	5.5 - 6.2	400	2.76
1100 065 60 80	2½	65	6.0	2.868 - 2.882	72.8 - 73.2	0.276 - 0.309	7.0 - 7.8	420	2.90
1100 080 60 80	3	80	6.0	3.492 - 3.508	88.7 - 89.1	0.300 - 0.336	7.6 - 8.5	370	2.55
1100 100 60 80	4	100	6.0	4.491 - 4.509	114.1 - 114.5	0.337 - 0.377	8.6 - 9.6	320	2.21
1100 155 60 80	6	155	6.0	6.614 - 6.636	168.0 - 168.6	0.432 - 0.484	11.0 - 12.3	280	1.93
1100 200 60 80	8	200	6.0	8.610 - 8.640	218.7 - 219.5	0.500 - 0.560	12.7 - 14.2	250	1.72
1100 250 60 80	10	250	6.0	10.735 - 10.765	272.7 - 273.4	0.593 - 0.664	15.1 - 16.9	230	1.59
1100 300 60 80	12	300	6.0	12.735 - 12.765	323.5 - 324.2	0.687 - 0.769	17.5 - 19.5	230	1.59

SCH. 80 Pipes Benefits

Chemical resistance:

Sch. 80 pipes have excellent chemical resistance which allows the transportation of many acids, alkalis and chemical concentrates without fear of corrosion and environmental pollution.

Abrasion resistance:

Sch. 80 pipes offer good resistance to abrasion and erosion from aggressive slurries, which can rapidly damage steel or other traditional pipe materials.

Smooth bore:

The exceptionally smooth bore results in low friction head losses and also inhibits the formation of scale, with consequent savings in pump energy consumption and reduced pressure drops.

Light weight:

At 5 times lighter than steel pipe, Sch. 80 pipes are much easier to handle, especially during installation at site.

Easy to join:

Solvent welding gives fast and trouble free installation and allows simple modifications to existing systems.

Manufacturer's Product Specification: Schedule 80 Fittings

Scope

This specification sheet covers the manufacturer's requirements for Xirtec® 140 PVC Schedule 80 pipe fittings as manufactured by IPEX. These fittings meet or exceed the standards set by the American Society for Testing and Materials (ASTM) and the National Sanitation Foundation (NSF) International, Standards 14/61.

PVC Materials

Rigid Xirtec® 140 PVC (Polyvinyl Chloride) used in the manufacture of Schedule 80 fittings is of Type I, Grade 1 compound (cell classification 12454) as stated in ASTM D1784. Raw material used in molding shall contain the specified amounts of color pigment, stabilizers, and other additives approved by NSF International.

Dimensions

Physical dimensions and tolerances of Xirtec® 140 PVC Schedule 80 IPS fittings as manufactured by IPEX meet the requirements of ASTM Standard Specification D2467 for socket-type fittings and ASTM D2464 for threaded fittings. Threaded fittings have Taper Pipe Threads in accordance with ANSI/ASME B1.20.1. Flanged fittings have nominal dimensions in accordance with ANSI/ASME B16.5.

Marking

Xirtec® 140 PVC Schedule 80 fittings are marked as prescribed in ASTM D2467 and D2464 to indicate the manufacturer's name and trademark, material designation, the NSF mark, size of fitting, and ASTM designation D2467 (socket) or D2464 (threaded).

Sample Specification

All Schedule 80 socket fittings shall conform to ASTM D2467. All Schedule 80 threaded fittings shall conform to ASTM D2464. All 150 Class flanges shall conform to ANSI/ASME B16.5. All pipe, fittings, and valves shall be compatible Xirtec® 140 compound and produced by one manufacturer; as supplied by IPEX.

Notes

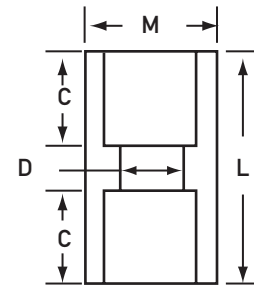
All dimensions are in inches unless otherwise specified. Dimensions are subject to change without notice. Contact the factory for clarifications.



COUPLINGS

Nom. Pipe Size	Xirtec		Critical Dimensions			
	Univ. Part No.	IPEX Part No.	C	D	L	M
1/4 x 1/4	829002	036088	0.655	0.302	1.375	0.845
3/8 x 3/8	829003	036089	0.750	0.423	1.625	1.000
1/2 x 1/2	829005	036090	0.900	0.526	1.920	1.240
3/4 x 3/4	829007	036091	1.035	0.722	2.170	1.505
1 x 1	829010	036092	1.145	0.936	2.395	1.770
1-1/4 x 1-1/4	829012	036093	1.280	1.255	2.670	2.140
1-1/2 x 1-1/2	829015	036094	1.400	1.476	2.915	2.410
2 x 2	829020	036095	1.535	1.913	3.170	2.900
2-1/2 x 2-1/2	829025	036096	1.780	2.290	3.755	3.570
3 x 3	829030	036097	1.900	2.864	4.025	4.195
4 x 4	829040	036098	2.275	3.786	4.765	5.285
6 x 6	829060	036099	3.020	5.709	6.310	7.645
8 x 8	829080	036100	4.540	7.565	9.625	9.870

Imported fittings from Aliaxis.

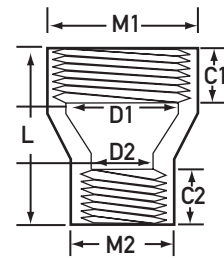


Schedule 80
COUPLINGS
Soc x Soc

REDUCING COUPLINGS

Nom. Pipe Size	Xirtec		Critical Dimensions						
	Univ. Part No.	IPEX Part No.	C1	C2	D1	D2	L	M1	M2
1/2 x 1/4	830072	036746	0.875	0.625	0.526	0.302	2.280	1.240	0.845
3/4 x 1/2	830101	036748	1.000	0.875	0.722	0.526	2.345	1.505	1.240
1 x 1/2	830130	036749	1.125	0.985	0.936	0.526	2.740	1.770	1.240
1 x 3/4	830131	036750	1.125	1.000	0.936	0.722	2.740	1.770	1.505
1-1/4 x 3/4	830167	036751	1.250	1.525	1.255	0.722	3.040	2.140	1.505
1-1/2 x 1	830211	036754	1.375	1.125	1.476	0.936	3.155	2.410	1.770
2 x 1-1/2	830251	035758	1.500	1.375	1.913	1.476	3.405	2.900	2.410

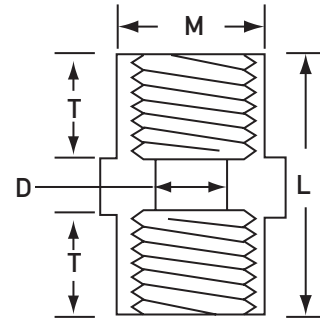
Imported fittings from Aliaxis.



Schedule 80
COUPLINGS
FPT x FPT - reducing

COUPLINGS

Nom. Pipe Size	Xirtec		Critical Dimensions			
	Univ. Part No.	IPEX Part No.	T	D	L	M
¼ x ¼	830002	036104	0.595	0.302	1.345	0.845
⅜ x ⅜	830003	036105	0.595	0.423	1.470	1.000
½ x ½	830005	036106	0.755	0.526	1.605	1.240
¾ x ¾	830007	036107	0.755	0.722	1.620	1.505
1 x 1	830010	036108	0.940	0.936	2.010	1.770
1-¼ x 1-¼	830012	036109	1.055	1.255	2.210	2.140
1-½ x 1-½	830015	036110	1.065	1.476	2.225	2.410
2 x 2	830020	036111	1.200	1.913	2.500	2.900
2-½ x 2-½	830025	036112	1.460	2.290	3.125	3.570
3 x 3	830030	036113	1.530	2.864	3.190	4.195
4 x 4	830040	036114	1.585	3.786	3.405	5.285

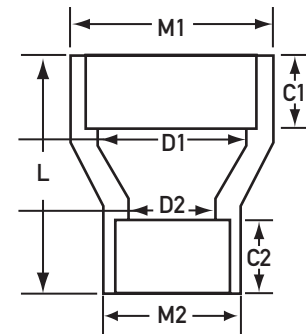


Schedule 80
COUPLINGS
FPT x FPT

Imported fittings from Aliaxis.

REDUCING COUPLINGS

Nom. Pipe Size	Xirtec		Critical Dimensions						
	Univ. Part No.	IPEX Part No.	C1	C2	D1	D2	L	M1	M2
¾ x 1/2	829101	036719	1.040	0.885	0.722	0.526	2.080	1.505	1.240
1 x ½	829130	036720	1.165	0.880	0.936	0.526	2.380	1.770	1.240
1 x ¾	829131	036721	1.165	1.035	0.936	0.722	2.385	1.770	1.505
1-¼ x ¾	829167	036723	1.280	1.000	1.255	0.722	2.590	2.140	1.505
1-¼ x 1	829168	036724	1.280	1.155	1.255	0.936	2.660	2.140	1.770
1-½ x ½	829209	036725	1.375	0.875	1.476	0.526	2.845	2.140	1.240
1-½ x ¾	829210	036726	1.375	1.000	1.476	0.722	2.845	2.140	1.505
1-½ x 1	829211	036727	1.410	1.160	1.476	0.936	3.060	2.140	1.770
1-½ x 1-¼	829212	036728	1.410	1.280	1.476	1.255	3.050	2.140	2.140
2 x ½	829247	036897	1.500	0.885	1.913	0.526	2.480	2.900	1.240
2 x 1	829249	036729	1.545	1.160	1.913	0.936	3.530	2.900	1.770
2 x 1-½	829251	036731	1.540	1.410	1.913	1.476	3.515	2.900	2.410
3 x 2	829338	036735	1.910	1.535	2.864	1.913	4.200	4.195	2.900
4 x 2	829420	036736	2.290	1.540	3.786	1.913	5.110	5.285	2.900
4 x 3	829422	036738	2.290	1.905	3.786	2.864	5.105	5.285	4.195
6 x 4	829532	036740	3.030	2.290	5.709	3.786	6.740	7.645	5.285
8 x 6	829585	036743	4.040	3.000	7.565	5.709	8.040	9.870	7.645

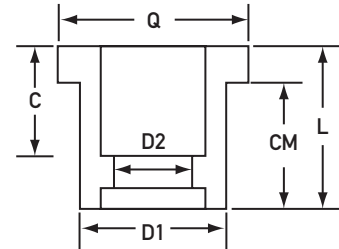


Schedule 80
COUPLINGS
Soc x Soc - reducing

Imported fittings from Aliaxis.

REDUCING BUSHINGS

Nom. Pipe Size	Xirtec		Critical Dimensions					
	Univ. Part No.	IPEX Part No.	C	CM	D1	D2	L	Q
3/8 x 1/4	837052	036599	0.750	0.770	0.675	0.302	0.975	0.800
1/2 x 1/4	837072	036600	0.875	0.890	0.840	0.302	1.090	0.970
1/2 x 3/8	837073	036601	0.875	0.880	0.840	0.423	1.115	1.005
3/4 x 1/2	837101	036604	1.000	1.020	1.050	0.526	1.380	1.250
1 x 1/2	837130	036605	1.125	1.125	1.315	0.526	1.500	1.635
1 x 3/4	837131	036606	1.125	1.305	1.315	0.722	1.505	1.635
1-1/4 x 1/2	837166	036607	1.250	1.260	1.660	0.526	1.635	2.080
1-1/4 x 3/4	837167	036608	1.250	1.255	1.660	0.722	1.625	2.075
1-1/4 x 1	837168	036609	1.250	1.305	1.660	0.936	1.685	2.065
1-1/2 x 1/2	837209	036610	1.375	1.380	1.900	0.526	1.755	2.260
1-1/2 x 3/4	837210	036611	1.375	1.380	1.900	0.722	1.750	2.260
1-1/2 x 1	837211	036612	1.375	1.380	1.900	0.936	1.755	2.260
1-1/2 x 1-1/4	837212	036613	1.295	1.385	1.900	1.255	1.760	2.265
2 x 1/2	837247	036614	1.500	1.505	2.375	0.526	1.875	2.815
2 x 3/4	837248	036615	1.500	1.505	2.375	0.722	1.865	2.820
2 x 1	837249	036616	1.500	1.520	2.375	0.936	1.875	2.825
2 x 1-1/4	837250	036617	1.500	1.520	2.375	1.255	1.895	2.840
2 x 1-1/2	837251	036618	1.500	1.445	2.375	1.476	1.885	2.820
2-1/2 x 1-1/4	837290	036620	1.350	2.000	2.875	1.255	2.300	3.280
2 1/2 x 1-1/2	837291	036621	1.560	2.000	2.875	1.476	2.300	3.290
2-1/2 x 2	837292	036622	1.750	1.885	2.875	1.913	2.120	3.270
3 x 1	837335	036623	1.875	1.900	3.500	0.936	2.265	3.905
3 x 1-1/4	837336	036269	1.875	1.870	3.500	1.255	2.265	3.735
3 x 1-1/2	837337	036624	1.875	1.870	3.500	1.476	2.250	3.890
3 x 2	837338	036625	1.875	1.870	3.500	1.913	2.250	3.890
3 x 2-1/2	837339	036626	1.875	1.885	3.500	2.290	2.260	3.900
4 x 2	837420	036628	2.250	2.280	4.500	1.913	2.660	4.910
4 x 2-1/2	837421	036629	2.250	2.270	4.500	2.290	2.655	4.890
4 x 3	837422	036630	2.250	2.270	4.500	2.864	2.665	4.920
6 x 2	837528	036632	3.000	3.470	6.625	1.913	3.990	6.850
6 x 3	837530	036633	3.000	3.100	6.625	2.864	3.720	7.335
6 x 4	837532	036634	3.000	3.105	6.625	3.786	3.720	7.330
8 x 4	837582	136155	4.000	4.055	8.625	3.786	5.120	9.435
8 x 6	837585	036638	4.000	4.085	8.625	5.709	4.465	9.360



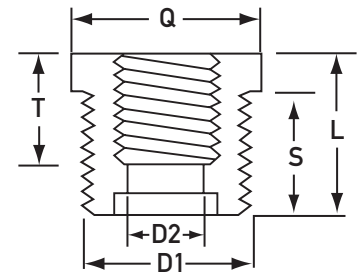
Schedule 80
REDUCING BUSHINGS
Spig x Soc

Imported fittings from Aliaxis.

REDUCING BUSHINGS

Nom. Pipe Size	Xirtec		Critical Dimensions					
	Univ. Part No.	IPEX Part No.	D1	D2	L	Q	S	T
3/8 x 1/4	839052	036647	0.423	0.302	0.810	0.805	0.600	0.625
1/2 x 1/4	839072	036648	0.526	0.302	0.875	0.875	0.680	0.570
1/2 x 3/8	839073	036649	0.526	0.423	0.940	1.000	0.745	0.580
3/4 x 1/4	839098	036651	0.722	0.302	1.010	1.185	0.785	0.675
3/4 x 3/8	839099	036652	0.722	0.423	1.005	1.200	0.785	0.600
3/4 x 1/2	839101	036653	0.722	0.526	0.995	1.380	0.685	0.760
1 x 1/4	839128	036654	0.936	0.302	1.230	1.500	0.960	0.630
1 x 3/8	839129	036655	0.936	0.423	1.225	1.500	0.980	0.625
1 x 1/2	839130	036656	0.936	0.526	1.130	1.685	0.815	0.765
1 x 3/4	839131	036657	0.936	0.722	1.160	1.690	0.820	0.775
1-1/4 x 1/2	839166	036658	1.255	0.526	1.370	2.070	0.990	0.695
1-1/4 x 3/4	839167	036659	1.255	0.722	1.390	2.075	1.010	0.805
1-1/4 x 1	839168	036660	1.255	0.936	1.395	2.070	1.015	1.020
1-1/2 x 1/2	839209	036661	1.476	0.526	1.215	2.100	0.900	0.835
1-1/2 x 3/4	839210	036662	1.476	0.722	1.375	2.315	0.985	0.805
1-1/2 x 1	839211	036663	1.476	0.936	1.380	2.315	0.990	0.995
1-1/2 x 1-1/4	839212	036664	1.476	1.255	1.380	2.315	1.010	1.015
2 x 1/2	839247	036665	1.913	0.526	1.405	2.820	1.035	0.690
2 x 3/4	839248	036666	1.913	0.722	1.385	2.760	1.005	0.810
2 x 1	839249	036667	1.913	0.936	1.385	2.770	0.995	0.995
2 x 1-1/4	839250	036668	1.913	1.255	1.410	2.815	1.035	0.860
2 x 1-1/2	839251	036669	1.913	1.476	1.380	2.760	1.010	1.010
2-1/2 x 2	839292	036672	2.290	1.913	1.970	3.125	1.555	1.065
3 x 1-1/2	839337	036673	2.864	1.476	1.995	3.740	1.625	1.040
3 x 2	839338	036674	2.864	1.913	2.030	3.755	1.625	1.065
3 x 2-1/2	839339	036675	2.864	2.290	2.020	3.740	1.630	1.560
4 x 2	839420	036676	3.786	1.913	1.940	4.730	1.550	1.000
4 x 3	839422	036677	3.786	2.864	2.125	4.755	1.730	1.625

Imported fittings from Aliaxis.

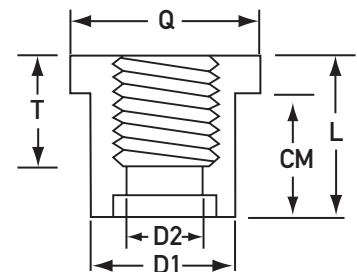


Schedule 80
REDUCING BUSHINGS
MPT x FPT

REDUCING BUSHINGS

Nom. Pipe Size	Xirtec		Critical Dimensions						
	Univ. Part No.	IPEX Part No.	CM	D1	D2	L	Q	T	
3/8 x 1/4	838052	036679	0.750	0.675	0.302	0.960	0.795	0.600	
1/2 x 1/4	838072	036681	0.820	0.840	0.302	1.015	0.880	0.570	
1/2 x 3/8	838073	036682	0.810	0.840	0.423	1.010	0.890	0.595	
3/4 x 1/4	838098	036683	1.000	1.050	0.302	1.230	1.200	0.705	
3/4 x 1/2	838101	036684	1.025	1.050	0.526	1.345	1.375	0.775	
1 x 3/8	838129	036685	1.160	1.315	0.423	1.410	1.500	0.590	
1 x 1/2	838130	036686	1.180	1.315	0.526	1.500	1.685	0.765	
1 x 3/4	838131	036687	1.200	1.315	0.722	1.500	1.685	0.775	
1-1/4 x 1/2	838166	036688	1.305	1.660	0.526	1.680	2.065	0.805	
1-1/4 x 3/4	838167	036689	1.255	1.660	0.722	1.645	2.075	0.690	
1-1/4 x 1	838168	036690	1.305	1.660	0.936	1.685	2.065	0.810	
1-1/2 x 1/2	838209	036691	1.375	1.900	0.526	1.755	2.260	0.685	
1-1/2 x 3/4	838210	036692	1.430	1.900	0.722	1.815	2.325	0.810	
1-1/2 x 1	838211	036693	1.415	1.900	0.936	1.805	2.320	1.010	
1-1/2 x 1-1/4	838212	036694	1.375	1.900	1.255	1.776	2.260	0.900	
2 x 1/2	838247	036695	1.505	2.375	0.526	1.880	2.810	0.685	
2 x 3/4	838248	036696	1.535	2.375	0.722	1.925	2.760	0.805	
2 x 1	838249	036697	1.540	2.375	0.936	1.915	2.755	0.995	
2 x 1-1/4	838250	036698	1.535	2.375	1.255	1.920	2.755	0.995	
2 x 1-1/2	838251	036699	1.535	2.375	1.476	1.920	2.755	0.995	
2-1/2 x 1/2	838287	236002	1.990	2.875	0.526	2.380	3.110	0.760	
2-1/2 x 3/4	838288	036700	1.990	2.875	0.722	2.380	3.110	0.840	
2-1/2 x 1	838289	036701	1.990	2.875	0.936	2.380	3.110	1.030	
2-1/2 x 1-1/4	838290	036702	1.990	2.875	1.255	2.380	3.110	1.045	
2-1/2 x 1-1/2	838291	036703	1.977	2.875	1.476	2.400	3.110	1.045	
2-1/2 x 2	838292	036704	1.750	2.875	1.913	1.955	3.190	1.000	
3 x 3/4	838334	036705	1.880	3.500	0.722	2.270	3.740	0.720	

Imported fittings from Aliaxis.

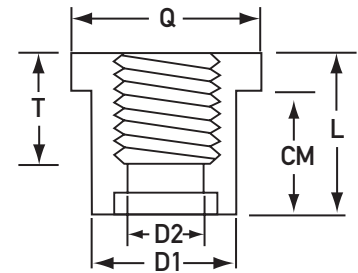


Schedule 80
REDUCING BUSHINGS
Spig x FPT

REDUCING BUSHINGS

Nom. Pipe Size	Xirtec		Critical Dimensions						
	Univ. Part No.	IPEX Part No.	C	M	D1	D2	Q	T	
3 x 1	838335	036706	1.980	3.500	0.936	2.375	3.740	1.045	
3 x 1-¼	838336	036707	1.965	3.500	1.255	2.350	3.970	1.040	
3 x 1-½	838337	036708	1.995	3.500	1.476	2.390	3.720	1.060	
3 x 2	838338	036709	1.870	3.500	1.913	2.260	3.720	1.060	
3 x 2-½	838339	036710	1.750	3.500	2.290	2.095	3.845	1.440	
4 x 2	838420	036711	2.280	4.500	1.913	2.655	4.900	1.710	
4 x 2-½	838421	036712	2.260	4.500	2.290	2.640	4.730	1.560	
4 x 3	838422	036713	2.330	4.500	2.864	2.655	4.895	2.050	
6 x 2	838528	036714	3.485	6.625	1.913	4.000	6.845	1.085	
6 x 3	838530	036715	3.470	6.625	2.864	4.000	6.870	1.670	
6 x 4	838532	036716	3.500	6.625	3.786	4.000	6.860	1.760	

Imported fittings from Aliaxis.

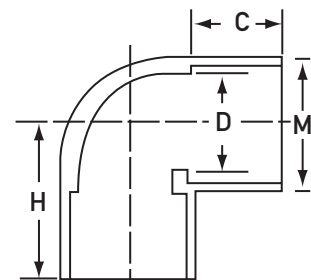


Schedule 80
REDUCING BUSHINGS
Spig x FPT Cont.

90° ELBOWS

Nom. Pipe Size	Xirtec		Critical Dimensions			
	Univ. Part No.	IPEX Part No.	C	D	H	M
¼ x ¼	806002	036179	0.655	0.302	1.000	0.845
⅜ x ⅜	806003	036180	0.780	0.423	1.250	1.000
½ x ½	806005	036181	0.890	0.524	1.445	1.215
¾ x ¾	806007	036182	1.020	0.722	1.685	1.470
1 x 1	806010	036183	1.145	0.936	1.940	1.760
1-¼ x 1-¼	809012	036184	1.270	1.255	2.160	2.145
1-½ x 1-½	806015	036185	1.400	1.476	2.400	2.385
2 x 2	806020	036186	1.525	1.913	2.805	2.955
2-½ x 2-½	806025	036187	1.775	2.290	3.300	3.580
3 x 3	806030	036188	1.935	2.864	3.745	4.230
4 x 4	806040	036189	2.265	3.786	4.625	5.345
6 x 6	806060	036191	3.025	5.709	6.650	7.615
8 x 8	806080	036192	4.125	7.565	8.600	9.775
10 x 10	806100	036864	5.500	9.493	11.315	10.780
12 x 12	806120	036865	6.500	11.294	13.385	14.200

Imported fittings from Aliaxis.

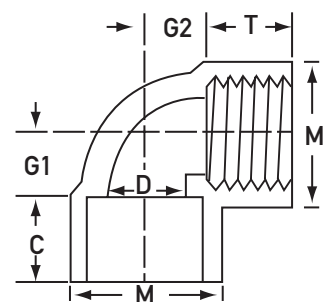


Schedule 80
90° ELBOWS
Soc x Soc

90° ELBOWS

Nom. Pipe Size	Xirtec		Critical Dimensions						
	Univ. Part No.	IPEX Part No.	C	D	G1	G2	M	T	
½ x ½	807005	036172	0.895	0.526	0.540	0.535	1.200	0.905	
¾ x ¾	807007	036173	1.015	0.722	0.610	0.590	1.505	1.035	
1 x 1	807010	036174	1.155	0.936	0.785	0.785	1.760	1.150	
1-¼ x 1-¼	807012	036175	1.275	1.255	0.975	0.975	2.145	1.275	
1-½ x 1-½	807015	036176	1.375	1.476	1.040	1.035	2.385	1.400	
2 x 2	807020	036177	1.530	1.913	1.375	1.470	2.955	0.970	

Imported fittings from Aliaxis.

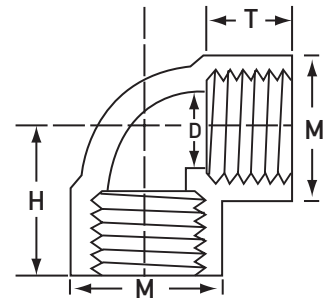


Schedule 80
90° ELBOWS
Soc x FPT

90° ELBOWS

Nom. Pipe Size	Xirtec		Critical Dimensions			
	Univ. Part No.	IPEX Part No.	D	H	M	T
¼ x ¼	808002	036197	0.302	0.940	0.845	0.625
⅜ x ⅜	808003	036198	0.423	1.000	1.000	0.625
½ x ½	808005	036199	0.526	1.370	1.215	0.740
¾ x ¾	808007	036200	0.722	1.615	1.470	0.825
1 x 1	808010	036201	0.936	1.810	1.760	1.130
1-¼ x 1-¼	808012	036202	1.255	1.795	2.145	0.930
1-½ x 1-½	808015	036203	1.476	2.040	2.385	0.930
2 x 2	808020	036204	1.913	2.370	2.955	1.095
2-½ x 2-½	808025	036205	2.290	2.935	3.580	1.775
3 x 3	808030	036206	2.864	3.160	4.230	1.420
4 x 4	808040	036207	3.786	3.735	5.345	1.495

Note: T=the inside thread depth (bell depth)
Imported fittings from Aliaxis.

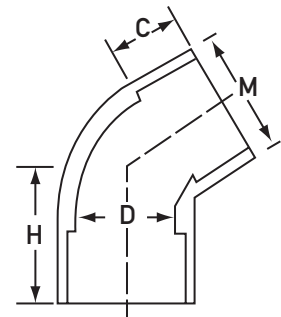


Schedule 80
90° ELBOWS
FPT x FPT

45° ELBOWS

Nom. Pipe Size	Xirtec		Critical Dimensions			
	Univ. Part No.	IPEX Part No.	C	D	H	M
¼ x ¼	817002	036142	0.655	0.302	0.815	0.845
⅜ x ⅜	817003	036143	0.750	0.423	0.970	1.000
½ x ½	817005	036144	0.890	0.526	1.200	1.215
¾ x ¾	817007	036145	1.020	0.722	1.350	1.470
1 x 1	817010	036146	1.150	0.936	1.475	1.760
1-¼ x 1-¼	817012	036147	1.265	1.255	1.660	2.145
1-½ x 1-½	817015	036148	1.385	1.476	1.790	2.385
2 x 2	817020	036149	1.505	1.913	2.000	2.955
2-½ x 2-½	817025	036150	1.760	2.290	2.480	3.580
3 x 3	817030	036151	1.885	2.864	2.700	4.230
4 x 4	817040	036152	2.260	3.786	3.095	5.345
6 x 6	817060	036154	3.030	5.709	4.575	7.615
8 x 8	817080	036155	4.040	7.565	6.250	9.775
10 x 10	817100	036862	5.500	9.493	8.065	10.780
12 x 12	817020	036863	6.500	11.294	9.580	14.200

Imported fittings from Aliaxis.

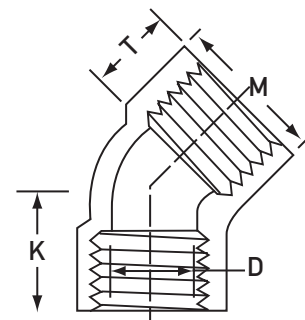


Schedule 80
45° ELBOWS
Soc x Soc

45° ELBOWS

Nom. Pipe Size	Xirtec		Critical Dimensions			
	Univ. Part No.	IPEX Part No.	D	K	M	T
¼ x ¼	819002	036160	0.302	0.780	0.845	0.595
⅜ x ⅜	819003	036161	0.423	0.815	1.000	0.815
½ x ½	819005	036162	0.526	0.995	1.215	0.675
¾ x ¾	819007	036163	0.722	1.195	1.470	0.675
1 x 1	819010	036164	0.936	1.380	1.760	0.845
1-¼ x 1-¼	819012	036165	1.255	1.620	2.145	0.895
1-½ x 1-½	819015	036166	1.476	1.810	2.385	0.895
2 x 2	819020	036167	1.913	2.060	2.955	0.915
2-½ x 2-½	819025	036168	2.290	2.665	3.580	1.455
3 x 3	819030	036169	2.864	2.990	4.230	1.540
4 x 4	819040	036170	3.786	3.495	5.345	1.600

Note: T=the inside thread depth (bell depth)
Imported fittings from Aliaxis.



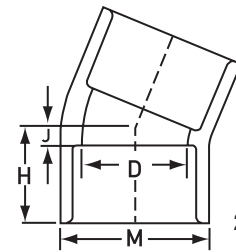
Schedule 80
45° ELBOWS
FPT x FPT



22.5° ELBOWS

Nom. Pipe Size	Xirtec		Critical Dimensions			
	Univ. Part No.	IPEX Part No.	D	H	J	M
2 x 2	816020	036134	1.913	1.875	0.440	2.955
3 x 3	816030	036135	2.864	2.405	0.565	4.230
4 x 4	816040	036136	3.786	2.875	0.625	5.345

Imported fittings from Aliaxis.

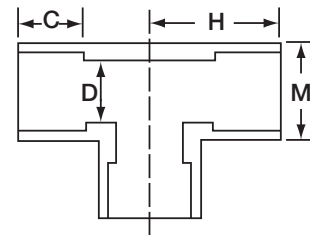


Schedule 80
22.5° ELBOWS
Soc x Soc

TEES

Nom. Pipe Size	Xirtec		Critical Dimensions			
	Univ. Part No.	IPEX Part No.	C	D	H	M
¼ x ¼ x ¼	801002	036768	0.655	0.302	0.970	0.845
⅜ x ⅜ x ⅜	801003	036769	0.780	0.423	1.250	0.985
½ x ½ x ½	801005	036770	0.895	0.526	1.405	1.240
¾ x ¾ x ¾	801007	036771	1.015	0.722	1.595	1.415
1 x 1 x 1	801010	036772	1.145	0.936	1.845	1.750
1-¼ x 1-¼ x 1-¼	801012	036773	1.270	1.255	2.155	2.350
1-½ x 1-½ x 1-½	801015	036774	1.395	1.476	2.410	2.405
2 x 2 x 2	801020	036775	1.520	1.913	2.800	2.895
2-½ x 2-½ x 2-½	801025	036776	1.775	2.290	3.280	3.570
3 x 3 x 3	801030	036777	1.900	2.864	3.720	4.200
4 x 4 x 4	801040	036778	2.270	3.786	4.595	5.280
6 x 6 x 6	801060	036780	3.030	5.709	6.530	7.575
8 x 8 x 8	801080	036781	4.130	7.565	8.625	9.810
10 x 10 x 10	801100	036866	5.500	9.493	11.250	12.000
12 x 12 x 12	801120	036876	6.500	11.294	13.385	14.200

Imported fittings from Aliaxis.

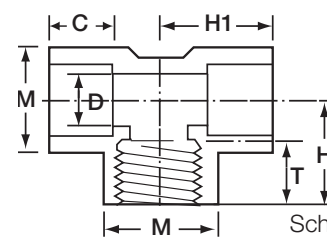


Schedule 80
TEE
Soc x Soc x Soc

TEES

Nom. Pipe Size	Xirtec		Critical Dimensions					
	Univ. Part No.	IPEX Part No.	C	D	H1	H2	M	T
½ x ½ x ½	802005	036828	0.905	0.526	1.375	1.375	1.240	0.905
¾ x ¾ x ¾	802007	036829	1.030	0.722	1.615	1.615	1.415	1.030
1 x 1 x 1	802010	036830	1.150	0.936	1.815	1.815	1.750	1.150
2 x 2 x 2	802020	036832	1.500	1.913	2.405	2.405	2.895	0.970

Imported fittings from Aliaxis.

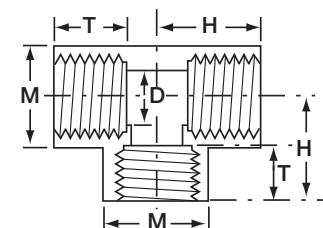


Schedule 80
TEE
Soc x Soc x FPT

TEES

Nom. Pipe Size	Xirtec		Critical Dimensions			
	Univ. Part No.	IPEX Part No.	D	H	M	T
¼ x ¼ x ¼	805002	036817	0.302	0.970	0.845	0.655
⅜ x ⅜ x ⅜	805003	036818	0.423	1.030	0.985	0.625
½ x ½ x ½	805005	036819	0.526	1.135	1.240	0.905
¾ x ¾ x ¾	805007	036820	0.722	1.605	1.415	1.020
1 x 1 x 1	805010	036821	0.936	1.815	1.750	1.170
1-¼ x 1-¼ x 1-¼	805012	036822	1.255	1.885	2.350	1.000
1-½ x 1-½ x 1-½	805015	036823	1.476	2.055	2.405	0.985
2 x 2 x 2	805020	036824	1.913	2.370	2.895	1.040
2-½ x 2-½ x 2-½	805025	036825	2.290	2.965	3.570	1.450
3 x 3 x 3	805030	036826	2.864	3.180	3.200	1.425
4 x 4 x 4	805040	036827	3.786	3.720	5.280	1.515

Imported fittings from Aliaxis.



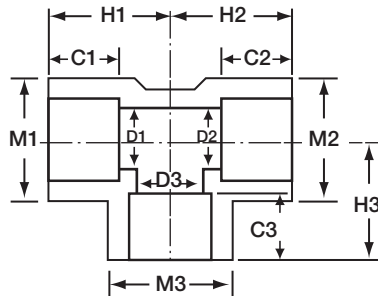
Schedule 80
TEE
FPT x FPT x FPT



REDUCING TEES

Nom. Pipe Size	Xirtec		Critical Dimensions												
	Univ. Part No.	IPEX Part No.	C1	C2	C3	D1	D2	D3	H1	H2	H3	M1	M2	M3	
3/4 x 3/4 x 1/2	801101	036786	1.030	1.030	0.890	0.722	0.722	0.526	1.665	1.665	1.465	1.415	1.415	1.240	
3/4 x 3/4 x 1	801102	036787	1.130	1.130	1.300	0.722	0.722	0.936	1.665	1.665	1.930	1.415	1.415	1.750	
1 x 3/4 x 3/4	-	036790	1.300	1.115	1.300	0.936	0.722	0.722	1.880	1.780	1.780	1.750	1.415	1.415	
1 x 3/4 x 1	801126	036791	1.300	1.300	1.130	0.936	0.722	0.936	1.880	1.880	1.780	1.750	1.415	1.750	
1 x 1 x 1/2	801130	036788	1.125	1.125	0.875	0.936	0.936	0.526	1.720	1.720	1.750	1.750	1.750	1.240	
1 x 1 x 3/4	801131	036789	1.315	1.315	1.025	0.936	0.936	0.722	1.930	1.930	1.735	1.750	1.750	1.415	
1-1/4 x 1 x 3/4	801157	036792	1.250	1.250	1.000	1.255	0.936	0.722	1.940	1.875	2.065	2.350	1.750	1.415	
1-1/4 x 1-1/4 x 3/4	801167	036793	1.460	1.460	1.150	1.255	1.255	0.722	2.210	2.210	2.020	2.350	2.350	1.750	
1-1/4 x 1-1/4 x 1	801168	036794	1.280	1.250	0.875	1.255	1.255	0.936	2.155	2.125	2.440	2.350	2.350	1.750	
1-1/2 x 1-1/2 x 3/4	801210	036795	1.600	1.600	1.150	1.476	1.476	0.722	2.250	2.250	2.210	2.405	2.405	1.415	
1-1/2 x 1-1/2 x 1	801211	036796	1.250	1.250	1.125	1.476	1.476	0.936	2.190	2.125	2.155	2.405	2.405	1.750	
2 x 2 x 1/2	801247	036797	1.405	1.405	1.145	1.913	1.913	0.526	2.305	2.305	2.160	2.895	2.895	1.240	
2 x 2 x 1/2	801248	036798	1.500	1.500	0.875	1.913	1.913	0.722	2.095	2.095	2.315	2.895	2.895	1.415	
2 x 2 x 1	801249	036799	1.500	1.500	1.000	1.913	1.913	0.936	2.190	2.190	2.440	2.895	2.895	1.750	
2 x 2 x 1-1/2	801251	036800	1.530	1.530	1.140	1.913	1.913	1.476	2.400	2.400	2.430	2.895	2.895	2.405	
3 x 3 x 2	801338	036802	1.530	1.530	1.380	2.864	2.864	1.913	2.740	2.740	2.660	4.200	4.200	2.895	
3 x 3 x 2-1/2	801339	036803	1.990	1.530	1.525	2.864	2.864	2.290	3.450	3.450	3.310	4.200	4.200	3.570	
4 x 4 x 2	801420	036804	2.260	2.260	1.525	3.786	3.786	1.913	4.460	4.460	4.085	5.280	5.280	2.895	
4 x 4 x 3	801422	036805	2.260	2.260	1.910	3.786	3.786	2.864	4.350	4.350	4.220	5.280	5.280	4.200	
6 x 6 x 3	801530	036807	2.975	2.975	1.875	5.709	5.709	2.864	5.805	5.805	5.630	7.575	7.575	4.200	
6 x 6 x 4	801532	036808	3.025	3.025	2.275	5.709	5.709	3.786	5.825	5.825	5.750	7.575	7.575	5.280	
8 x 8 x 6	801585	036810	4.120	4.120	3.060	7.565	7.565	5.709	7.720	7.720	7.625	9.810	9.810	7.575	

Imported fittings from Aliaxis.

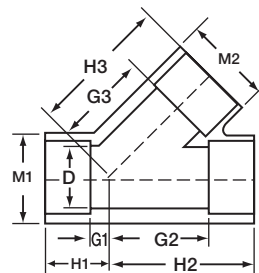


Schedule 80
TEE
Soc x Soc x Soc - reducing

WYE

Nom. Pipe Size	Xirtec		Critical Dimensions							
	Univ. Part No.	IPEX Part No.	D	G1	G2	G3	H1	H2	H3	M
1-1/2 x 1-1/2 x 1-1/2	875015	036854	1.476	0.690	2.375	2.405	2.065	3.750	3.750	2.345
2 x 2 x 2	875020	036855	1.913	0.845	3.030	3.030	2.345	4.530	4.530	2.875
3 x 3 x 3	875030	036856	2.864	1.070	4.440	3.585	2.945	6.315	5.450	4.115
4 x 4 x 4	875040	036857	3.786	1.320	5.675	4.600	3.570	7.925	6.850	5.190
6 x 6 x 6	875060	036858	5.709	1.875	8.305	6.745	4.875	11.300	9.740	7.510
8 x 8 x 8	875080	036859	7.565	7.220	15.280	15.530	11.470	19.530	19.530	9.690

Imported fittings from Aliaxis.



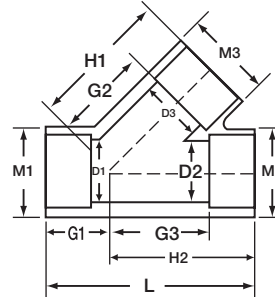
Schedule 80
45° WYE
Soc x Soc x Soc



REDUCING WYE

Nom. Pipe Size	Xirtec		Critical Dimensions											
	Univ. Part No.	IPEX Part No.	D1	D2	D3	G1	G2	G3	H1	H2	L	M1	M2	M3
6 x 6 x 4	875532	036861	5.709	5.709	3.786	2.560	8.000	7.125	10.250	10.125	12.690	7.605	7.605	5.400

Imported fittings from Aliaxis.

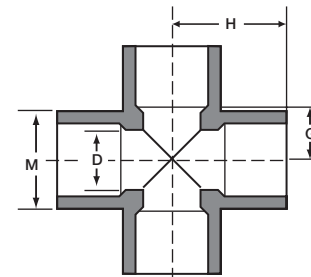


Schedule 80
45° WYE
Soc x Soc x Soc - Reducing

CROSSES

Nom. Pipe Size	Xirtec		Critical Dimensions				
	Univ. Part No.	IPEX Part No.	D	H	J	M	
½ x ½ x ½ x ½	820005	036116	0.526	0.565	1.470	1.510	
¾ x ¾ x ¾ x ¾	820007	036117	0.722	0.610	1.640	1.710	
1 x 1 x 1 x 1	820010	036118	0.936	0.955	2.110	2.110	
1-¼ x 1-¼ x 1-¼ x 1-¼	820012	036119	1.255	1.095	2.375	2.440	
1-½ x 1-½ x 1-½ x 1-½	820015	036120	1.476	1.235	2.640	2.575	
2 x 2 x 2 x 2	820020	036121	1.913	1.530	3.000	3.040	
2-½ x 2-½ x 2-½ x 2-½	820025	036122	2.290	1.750	3.440	3.350	
3 x 3 x 3 x 3	820030	036123	2.864	2.095	3.970	4.110	
4 x 4 x 4 x 4	820040	036124	3.786	2.625	4.875	5.250	

Imported fittings from Aliaxis.

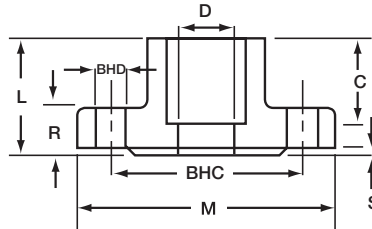


Schedule 80
CROSSES
Soc x Soc X Soc x Soc

FLANGES

Nom. Pipe Size	Xirtec		Critical Dimensions									
	Univ. Part No.	IPEX Part No.	BHC	BHD	BHN	C	D	L	M	R	S	
1/2	851005	036223	2.375	0.630	4.000	0.915	0.526	1.090	3.500	0.470	0.000	
3/4	851007	036224	2.750	0.630	4.000	1.015	0.722	1.225	3.880	0.525	0.050	
1	851010	036225	3.125	0.630	4.000	1.135	0.936	1.345	4.250	0.585	0.050	
1-1/4	851012	036226	3.500	0.620	4.000	1.255	1.255	1.465	4.620	0.650	0.050	
1-1/2	851015	036227	3.875	0.625	4.000	1.385	1.476	1.585	5.000	0.730	0.050	
2	851020	036228	4.750	0.745	4.000	1.525	1.913	1.755	6.000	0.820	0.065	
2-1/2	851025	036229	5.500	0.745	4.000	1.750	2.290	1.960	7.000	0.900	0.065	
3	851030	036230	6.000	0.700	4.000	1.920	2.864	2.125	7.500	1.070	0.080	
4	851040	036231	7.500	0.745	8.000	2.240	3.786	2.475	9.000	1.115	0.040	
5	851050	036232	8.500	0.880	8.000	3.030	4.768	3.250	10.175	1.040	0.040	
6	851060	036233	9.560	0.965	8.000	3.120	5.709	3.500	11.000	1.350	0.040	
8	851080	036234	11.705	0.880	8.000	4.000	7.565	4.575	13.580	1.500	0.045	

Note: BHN = Bolt Hole Numbers
Imported fittings from Aliaxis.

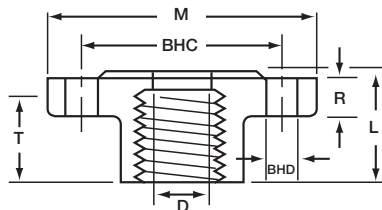


Schedule 80
FLANGE
One Piece Soc

FLANGES

Nom. Pipe Size	Xirtec		Critical Dimensions								
	Univ. Part No.	IPEX Part No.	BHC	BHD	BHN	D	L	M	R	T	
1/2	852005	036240	2.375	0.640	4.000	0.526	1.010	3.500	0.470	0.805	
3/4	852007	036241	2.750	0.640	4.000	0.722	1.010	3.880	0.525	0.810	
1	852010	036242	3.125	0.640	4.000	0.936	1.175	4.250	0.590	0.975	
1-1/4	852012	036243	3.500	0.625	4.000	1.254	1.215	4.620	0.655	1.010	
1-1/2	852015	036244	3.875	0.625	4.000	1.476	1.190	5.000	0.735	0.990	
2	852020	036245	4.750	0.750	4.000	1.913	1.250	6.000	0.810	1.035	
2-1/2	852025	036246	5.500	0.750	4.000	2.290	1.585	7.000	0.900	1.355	
3	852030	036247	6.000	0.755	4.000	2.864	1.700	7.500	0.900	1.460	
4	852040	036248	7.500	0.755	8.000	3.786	1.800	9.000	1.095	1.560	
6	852060	036249	9.500	0.880	8.000	5.709	3.500	11.000	1.270	3.050	

Note: BHN = Bolt Hole Numbers
Imported fittings from Aliaxis.

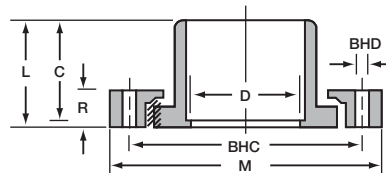


Schedule 80
FLANGE
One Piece FPT

FLANGES

Nom. Pipe Size	Xirtec		Critical Dimensions								
	Univ. Part No.	IPEX Part No.	BHC	BHD	BHN	C	D	L	M	R	
1½	854015HD	036323	3.870	0.620	4.000	1.410	1.476	1.810	5.000	0.995	
2	854020HD	036324	4.740	0.745	4.000	1.525	1.913	2.010	6.000	1.135	
3	854030HD	036326	6.000	0.700	4.000	1.890	2.864	2.055	7.500	0.895	
4	854040HD	036416	7.500	0.760	8.000	2.295	3.786	2.535	9.000	1.090	
6	854060HD	036417	9.500	0.900	8.000	3.025	5.709	3.200	11.000	1.220	
8	854080HD	036418	11.750	0.895	8.000	4.015	7.565	4.325	13.500	1.500	
10	854100HD	036419	14.250	1.030	12.000	5.250	9.493	5.560	16.000	1.810	
12	854120HD	036429	16.875	0.980	12.000	6.375	11.294	6.710	19.000	1.940	
14	854140HD	036358	18.750	1.085	12.000	6.750	12.412	7.510	21.000	2.750	
16	854160HD	036359	21.250	2.215	16.000	8.000	14.224	8.375	24.000	2.750	

Note: BHN = Bolt Hole Numbers
Imported fittings from Aliaxis.

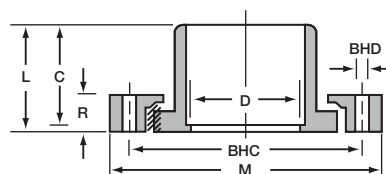


Schedule 80
FLANGE
Van Stone Heavy Duty Soc
with Fibre Loc Ring

FLANGES

Nom. Pipe Size	Xirtec		Critical Dimensions								
	Univ. Part No.	IPEX Part No.	BHC	BHD	BHN	C	D	L	M	R	
½	854005	036344	2.380	0.620	4.000	0.870	0.526	1.040	3.505	0.500	
¾	854007	036345	2.750	0.620	4.000	1.000	0.722	1.135	3.880	0.560	
1	854010	035346	3.120	0.620	4.000	1.125	0.936	1.260	4.240	0.645	
1-¼	854012	036347	3.500	0.620	4.000	1.250	1.255	1.390	4.610	0.650	
1-½	854015	036348	3.870	0.620	4.000	1.410	1.476	1.810	5.000	0.993	
2	854020	036349	4.740	0.745	4.000	1.525	1.913	2.010	6.000	1.135	
2-½	854025	036350	5.500	0.750	4.000	1.760	2.290	2.005	6.965	0.960	
3	854030	036351	6.000	0.700	4.000	1.890	2.864	2.055	7.500	0.895	
4	854040	036352	7.500	0.760	8.000	2.295	3.786	2.535	9.000	1.090	
5	854050	035353	8.500	0.880	8.000	2.650	4.768	2.980	9.100	1.140	
6	854060	036354	9.500	0.900	8.000	3.025	5.709	3.200	11.000	1.220	
8	854080	036355	11.750	0.895	8.000	4.015	7.565	4.325	13.500	1.500	
10	854100	036356	14.250	1.030	12.000	5.250	9.493	5.560	16.000	1.810	
12	854120	036357	16.875	0.980	12.000	6.375	11.294	6.710	19.000	1.940	

Note: BHN = Bolt Hole Numbers
Imported fittings from Aliaxis.

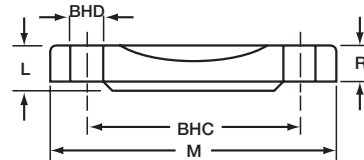


Schedule 80
FLANGE
Van Stone Soc with
PVC Ring

FLANGES

Nom. Pipe Size	Xirtec		Critical Dimensions						
	Univ. Part No.	IPEX Part No.	BHC	BHD	BHN	L	M	R	
1/2	853005	036250	2.380	0.630	4.000	0.520	3.500	0.470	
3/4	853007	036251	2.765	0.640	4.000	0.590	3.880	0.525	
1	853010	036252	3.125	0.645	4.000	0.635	4.250	0.590	
1-1/4	853012	036253	3.505	0.630	4.000	0.720	4.620	0.660	
1-1/2	853015	036254	3.895	0.625	4.000	0.820	5.000	0.745	
2	853020	036255	4.765	0.750	4.000	0.885	6.000	0.850	
2-1/2	853025	036256	5.500	0.740	4.000	0.960	7.000	0.900	
3	853030	036257	6.015	0.785	4.000	0.960	7.500	0.905	
4	853040	036258	7.515	0.785	4.000	1.150	9.000	1.105	
6	853060	036259	9.505	0.915	4.000	1.270	11.000	1.220	
8	853080	036260	11.755	0.910	4.000	1.560	13.500	1.500	

Note: BHN = Bolt Hole Numbers
Imported fittings from Aliaxis.

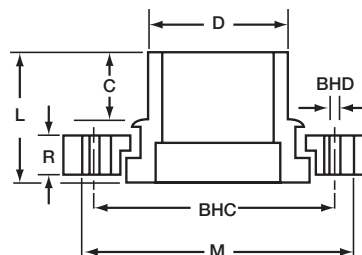


Schedule 80
FLANGE
Blind - One Piece

FLANGES

Nom. Pipe Size	Xirtec		Critical Dimensions								
	Univ. Part No.	IPEX Part No.	BHC	BHD	BHN	C	D	L	M	R	
1/2	856005	036374	2.330	0.620	4.000	0.990	0.840	1.750	3.505	0.500	
3/4	856007	036375	2.750	0.620	4.000	1.005	1.050	1.900	3.870	0.550	
1	856010	036376	3.120	0.620	4.000	1.140	1.315	2.130	4.240	0.635	
1-1/4	856012	036377	3.500	0.620	4.000	1.355	1.660	2.310	4.600	0.655	
1-1/2	856015	036378	3.880	0.620	4.000	1.560	1.900	2.605	5.040	0.690	
2	856020	036379	4.750	0.750	4.000	1.525	2.375	2.825	5.950	0.820	
2-1/2	856025	036380	5.500	0.750	4.000	1.790	2.875	3.065	6.965	0.955	
3	856030	036381	6.000	0.750	4.000	1.890	3.500	3.120	7.500	0.900	
4	856040	036382	7.500	0.750	8.000	2.290	4.500	3.660	9.000	1.110	
6	856060	036383	9.500	0.875	8.000	3.010	6.625	4.460	11.000	1.220	
8	856080	036384	11.750	0.875	8.000	4.015	8.625	5.250	13.500	1.505	
10	856100	036995	14.250	0.875	12.000	5.750	10.750	8.000	16.000	1.625	
12	856120	036996	17.000	0.875	12.000	6.315	12.750	8.500	19.00	1.625	

Note: BHN = Bolt Hole Numbers
Imported fittings from Aliaxis.



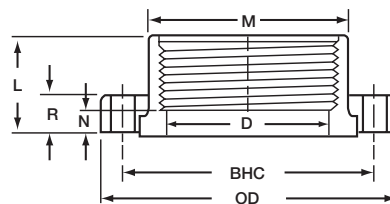
Schedule 80
FLANGE
Van Stone Spig



FLANGES

Nom. Pipe Size	Xirtec		Critical Dimensions									
	Univ. Part No.	IPEX Part No.	BHC	BHD	BHN	D	L	M	N	OD	R	
1/2	855005	036385	2.375	0.500	4.000	0.526	1.030	1.220	0.280	2.500	0.530	
3/4	855007	036386	2.750	0.500	4.000	0.722	1.155	1.375	0.405	3.875	0.565	
1	855010	036387	3.125	0.500	4.000	0.936	1.250	1.750	0.315	4.250	0.625	
1-1/4	855012	036388	3.500	0.500	4.000	1.255	1.375	2.125	0.405	4.625	0.690	
1-1/2	855015	036389	3.875	0.500	4.000	1.476	1.470	2.440	0.405	5.000	0.750	
2	855020	036390	4.750	0.625	4.000	1.913	1.565	2.970	0.500	6.000	0.815	
2-1/2	855025	036391	5.500	0.625	4.000	2.290	2.000	3.565	0.440	7.000	1.000	
3	855030	036392	6.000	0.750	4.000	2.864	2.125	4.250	0.500	7.500	1.065	
4	855040	036393	7.500	0.750	8.000	3.786	2.065	5.250	0.375	9.000	1.250	

Note: BHN = Bolt Hole Numbers
Imported fittings from Aliaxis.

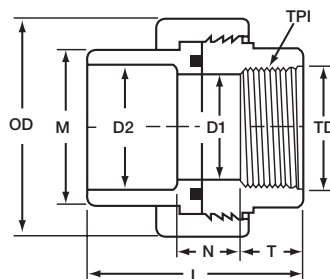


Schedule 80
FLANGE
Van Stone FPT

UNIONS

Nom. Pipe Size	Xirtec		Critical Dimensions									
	Univ. Part No.	IPEX Part No.	D1	D2	L	M	N	OD	T	TD	TPI	
1/2 x 1/2	859005	036410	0.526	0.840	2.095	1.200	0.470	1.970	0.750	0.840	14.000	
3/4 x 3/4	859007	036411	0.722	1.050	2.375	1.415	0.565	2.500	0.815	1.050	14.000	
1 x 1	859010	036412	0.936	1.315	2.565	1.755	0.405	2.875	1.065	1.315	11.500	
1-1/4 x 1-1/4	859012	036413	1.255	1.660	2.875	2.160	0.625	3.315	1.000	1.660	11.500	
1-1/2 x 1-1/2	859015	036414	1.476	1.900	3.125	2.480	0.845	3.565	0.970	1.900	11.500	
2 x 2	859020	036415	1.913	2.375	3.625	2.945	1.065	4.190	0.970	2.375	11.500	
3 x 3	859030	236010	2.864	3.500	5.065	4.255	1.500	5.750	1.625	3.500	8.000	
4 x 4	859040	236011	3.786	4.500	5.875	5.280	1.875	7.065	1.750	4.500	8.000	

Note: TPI = Threads Per Inch
Imported fittings from Aliaxis.

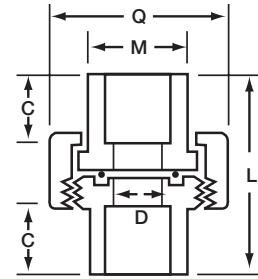


Schedule 80
UNIONS
Soc x FPT - Viton O-Rings

UNIONS

Nom. Pipe Size	Xirtec		Critical Dimensions				
	Univ. Part No.	IPEX Part No.	C	D	L	M	Q
1/4 x 1/4	857002	036833	0.625	0.302	1.925	0.855	1.650
3/8 x 3/8	857003	036834	0.750	0.423	2.140	1.000	1.785
1/2 x 1/2	857005	036835	0.895	0.526	2.305	1.200	1.985
3/4 x 3/4	857007	036836	1.010	0.722	2.590	1.415	2.370
1 x 1	857010	036837	1.150	0.936	2.890	1.755	2.680
1-1/4 x 1-1/4	857012	036838	1.270	1.255	3.385	2.160	3.095
1-1/2 x 1-1/2	857015	036839	1.385	1.476	3.840	2.480	3.835
2 x 2	857020	036840	1.510	1.913	4.150	2.945	4.805
3 x 3	857030	036842	1.890	2.864	4.970	4.255	6.920
4 x 4	857040	036843	2.250	3.786	5.920	5.280	7.125

Imported fittings from Aliaxis.

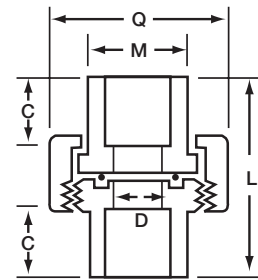


Schedule 80
UNIONS
Soc x Soc - Viton O-Rings

UNIONS

Nom. Pipe Size	Xirtec		Critical Dimensions				
	Univ. Part No.	IPEX Part No.	C	D	L	M	Q
1/4 x 1/4	897002	236004	0.625	0.302	1.940	0.855	1.655
3/8 x 3/8	897003	236005	0.750	0.423	2.155	1.000	1.780
1/2 x 1/2	897005	036956	0.890	0.526	2.310	1.200	1.980
3/4 x 3/4	897007	036964	1.015	0.722	2.570	1.415	2.345
1 x 1	897010	036980	1.135	0.936	2.860	1.755	2.665
1-1/4 x 1-1/4	897012	036981	1.270	1.255	3.395	2.160	3.085
1-1/2 x 1-1/2	897015	036982	1.385	1.476	3.820	2.480	3.805
2 x 2	897020	036983	1.515	1.913	4.185	2.945	4.805
3 x 3	897030	036984	1.880	2.864	4.955	4.255	4.010
4 x 4	897040	236006	2.250	3.786	5.875	5.280	7.065

Imported fittings from Aliaxis.

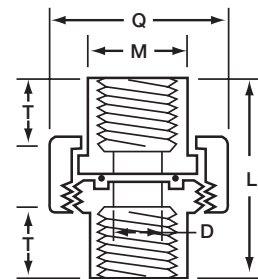


Schedule 80
UNIONS
Soc x Soc - EDPM O-Rings

UNIONS

Nom. Pipe Size	Xirtec		Critical Dimensions				
	Univ. Part No.	IPEX Part No.	D	L	M	Q	T
1/4 x 1/4	858002	036844	0.302	1.945	0.855	1.645	0.585
3/8 x 3/8	858003	036845	0.423	2.145	1.000	1.780	0.600
1/2 x 1/2	858005	036846	0.526	2.130	1.200	1.975	0.810
3/4 x 3/4	858007	036847	0.722	2.180	1.415	2.360	0.825
1 x 1	858010	036848	0.936	2.645	1.755	2.675	1.020
1-1/4 x 1-1/4	858012	036849	1.255	3.125	2.160	3.100	1.155
1-1/2 x 1-1/2	858015	036850	1.476	3.585	2.480	3.830	1.270
2 x 2	858020	036851	1.913	3.890	2.945	4.805	1.380
3 x 3	858030	036852	2.864	4.275	4.255	6.945	1.555
4 x 4	858040	036853	3.786	5.920	5.280	7.125	2.245

Imported fittings from Aliaxis.

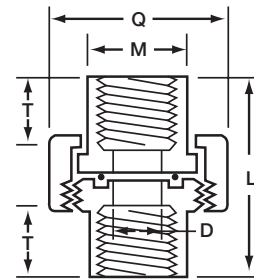


Schedule 80
UNIONS
FPT x FPT - Viton O-Rings

UNIONS

Nom. Pipe Size	Xirtec		Critical Dimensions				
	Univ. Part No.	IPEX Part No.	D	L	M	Q	T
¼ x ¼	898002	236007	0.302	1.940	0.855	1.655	0.500
⅜ x ⅜	898003	236008	0.423	2.155	1.000	1.780	0.500
½ x ½	898005	036985	0.526	2.115	1.200	1.980	0.815
¾ x ¾	898007	036986	0.722	2.350	1.415	2.290	0.820
1 x 1	898010	036987	0.936	2.650	1.755	2.665	1.015
1-¼ x 1-¼	898012	036988	1.255	3.105	2.160	3.090	1.130
1-½ x 1-½	898015	036989	1.476	3.070	2.480	3.810	1.265
2 x 2	898020	036990	1.913	3.300	2.945	4.785	1.395
3 x 3	898030	036993	2.864	4.260	4.255	6.915	1.545
4 x 4	898040	236009	3.786	5.860	5.280	6.980	1.480

Imported fittings from Aliaxis.

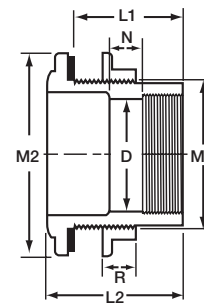


Schedule 80
UNIONS
FPT x FPT - EDPM O-Rings

ADAPTERS

Nom. Pipe Size	Xirtec		Critical Dimensions						
	Univ. Part No.	IPEX Part No.	D	L1	L2	M1	M2	N	R
½ x ½	871005	036038	0.526	2.440	2.905	1.220	2.030	1.500	0.625
¾ x ¾	871007	036039	0.722	2.470	2.940	1.625	2.250	1.190	0.625
1 x 1	871010	036040	0.936	2.815	3.315	1.970	2.625	1.250	0.625
1-¼ x 1-¼	871012	036041	1.255	2.845	3.405	2.315	3.095	1.530	0.625
1-½ x 1-½	871015	036042	1.476	2.815	3.625	2.690	3.595	1.250	0.625
2 x 2	871020	036043	1.913	3.250	4.125	3.250	4.875	1.625	0.750
3 x 3	871030	036218	2.864	4.500	5.500	4.565	6.000	2.190	1.000
4 x 4	871040	036046	3.786	4.000	5.000	5.500	7.500	1.250	1.250

Imported fittings from Aliaxis.

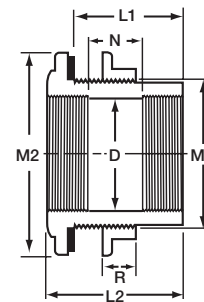


Schedule 80
ADAPTERS – MISC
Tank - Soc x FPT

ADAPTERS

Nom. Pipe Size	Xirtec		Critical Dimensions						
	Univ. Part No.	IPEX Part No.	D	L1	L2	M1	M2	N	R
½ x ½	872005	036047	0.526	2.190	2.940	1.220	2.030	1.500	0.625
¾ x ¾	872007	036048	0.722	2.470	2.940	1.625	2.250	1.500	0.625
1 x 1	872010	036049	0.936	2.815	3.315	1.970	2.625	1.250	0.625
1-¼ x 1-¼	872012	036050	1.255	2.845	3.405	2.315	3.095	1.530	0.625
1-½ x 1-½	872015	036051	1.476	3.065	3.595	2.690	3.595	1.690	0.625
2 x 2	872020	036052	1.913	3.250	4.125	3.250	4.875	2.815	0.750
3 x 3	872030	036053	2.864	4.500	5.500	4.565	6.000	2.690	1.000
4 x 4	872040	036055	3.786	4.000	5.000	5.500	7.500	2.000	1.250

Imported fittings from Aliaxis.

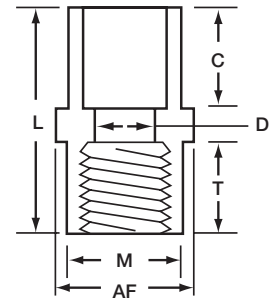


Schedule 80
ADAPTERS – MISC
Tank - FPT x FPT

ADAPTERS

Nom. Pipe Size	Xirtec		Critical Dimensions						
	Univ. Part No.	IPEX Part No.	AF	C	D	L	M	T	
¼ x ¼	835002	036209	0.820	0.635	0.302	1.320	0.820	0.595	
⅜ x ⅜	835003	036210	1.000	0.750	0.423	1.460	1.000	0.610	
½ x ½	835005	036211	1.385	0.890	0.526	1.745	1.250	0.750	
¾ x ¾	835007	036212	1.630	1.000	0.722	1.880	1.465	0.770	
1 x 1	835010	036213	1.955	1.130	0.936	2.180	1.780	0.950	
1-¼ x 1-¼	835012	036214	2.385	1.270	1.255	2.365	2.160	0.980	
1-½ x 1-½	835015	036215	2.695	1.390	1.476	2.480	2.625	0.995	
2 x 2	835020	036216	3.245	1.510	1.913	2.655	2.950	1.030	
2-½ x 2-½	835025	036217	3.830	1.770	2.290	3.355	3.540	1.405	
3 x 3	835030	036218	4.650	1.905	2.864	3.565	4.240	1.485	
4 x 4	835040	036219	5.865	2.275	3.786	4.035	5.340	1.590	
6 x 6	835060	036221	7.590	3.005	5.709	5.260	7.590	2.055	

Imported fittings from Aliaxis.

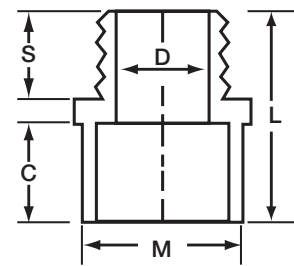


Schedule 80
ADAPTERS
Soc x FPT

ADAPTERS

Nom. Pipe Size	Xirtec		Critical Dimensions				
	Univ. Part No.	IPEX Part No.	C	D	L	M	S
½ x ½	836005	036420	0.890	0.526	1.890	1.250	0.755
¾ x ¾	836007	036421	1.015	0.722	2.085	1.465	0.820
1 x 1	836010	036422	1.140	0.936	2.390	1.780	0.975
1-¼ x 1-¼	836012	036423	1.270	1.255	2.610	2.160	1.020
1-½ x 1-½	836015	036424	1.385	1.476	2.745	2.625	1.030
2 x 2	836020	036425	1.515	1.913	2.925	2.950	1.070
2-½ x 2-½	836025	036426	1.765	2.290	3.510	3.540	1.410
3 x 3	836030	036427	1.890	2.864	4.040	4.240	1.740
4 x 4	836040	036428	2.270	3.786	4.385	5.340	1.740

Imported fittings from Aliaxis.

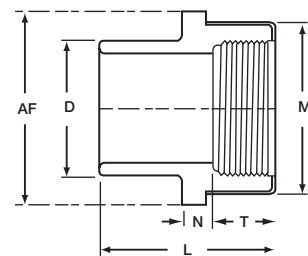


Schedule 80
ADAPTERS
Soc x MPT

ADAPTERS

Nom. Pipe Size	Xirtec		Critical Dimensions						
	Univ. Part No.	IPEX Part No.	AF	D	L	M	N	T	
½ x ½	878005SR	036965	1.395	0.840	1.750	1.220	0.155	0.695	
¾ x ¾	878007SR	036966	1.680	1.050	1.935	1.375	0.190	0.695	
1 x 1	878010SR	036967	2.015	1.315	2.250	1.690	0.220	0.890	
1-¼ x 1-¼	878012SR	036968	2.170	1.660	2.470	2.065	0.250	0.945	
1-½ x 1-½	878015SR	036969	2.490	1.900	2.655	2.440	0.280	0.960	
2 X 2	878020SR	036970	3.375	2.375	2.815	3.030	0.365	0.990	
3 x 3	878030SR	236000	4.285	3.500	3.815	4.280	0.530	1.350	
4 x 4	878040SR	236001	4.745	4.500	4.375	5.250	0.625	1.630	

Imported fittings from Aliaxis.

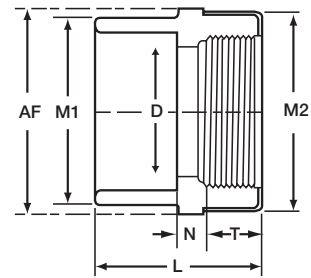


Schedule 80
ADAPTERS
Spig x SS Reinforced FPT

ADAPTERS

Nom. Pipe Size	Xirtec		Critical Dimensions						
	Univ. Part No.	IPEX Part No.	AF	D	L	M1	M2	N	T
1/2 x 1/2	835005SR	036971	1.390	0.526	1.750	1.190	1.220	0.190	0.690
3/4 x 3/4	835007SR	069972	1.495	0.722	1.875	1.405	1.375	0.125	0.750
1 x 1	835010SR	036973	2.015	0.936	2.155	1.750	1.690	0.125	0.915
1-1/4 x 1-1/4	835012SR	036974	2.440	1.255	2.315	2.125	2.065	0.190	0.915
1-1/2 x 1-1/2	835015SR	036975	2.805	1.476	2.440	2.405	2.440	0.220	0.915
2 x 2	835020SR	036976	3.375	1.913	2.690	3.000	3.030	0.280	0.940
2-1/2 x 2-1/2	835025SR	036977	3.600	2.290	3.250	3.560	3.590	0.345	1.325
3 x 3	835030SR	036978	4.280	2.864	3.500	4.250	4.280	0.220	1.445
4 x 4	835040SR	036979	5.805	3.786	3.970	5.220	5.250	0.125	1.530

Imported fittings from Aliaxis.

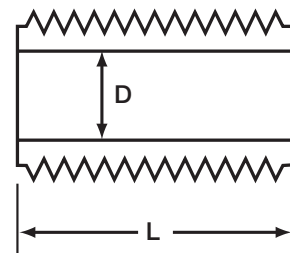


Schedule 80
ADAPTERS
Soc x SS Reinforced FPT

NIPPLES

Nom. Pipe Size	Xirtec		Critical Dimensions	
	Univ. Part No.	IPEX Part No.	D	L
1/4 x 7/8	880005	036434	0.302	0.875
3/8 x 1	881005	036435	0.423	1.000
1/2 x 1-1/8	882005	036436	0.526	1.125
3/4 x 1-3/8	883005	036437	0.722	1.375
1 x 1-1/2	884005	036438	0.936	1.500
1-1/4 x 1-5/8	885005	036439	1.255	1.625
1-1/2 x 1-3/4	886015	036440	1.476	1.750
2 x 2	887005	036441	1.913	2.000
2-1/2 x 2-1/2	888005	036442	2.290	2.500
3 x 2-5/8	889005	036443	2.864	2.625
4 x 2-7/8	889005	036444	3.786	2.875

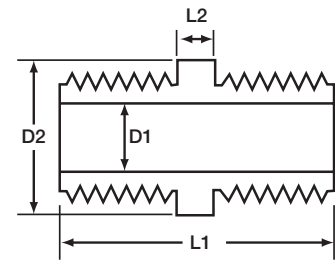
Imported fittings from Aliaxis.



Schedule 80
NIPPLES
Close

NIPPLES

Nom. Pipe Size	Xirtec		Critical Dimensions			
	Univ. Part No.	IPEX Part No.	D1	D2	L1	L2
¼ x 1-½	880015	036445	0.302	0.540	1.500	0.620
¼ x 2	880020	036456	0.302	0.540	2.000	1.120
¼ x 2-½	880025	036457	0.302	0.540	2.500	1.620
¼ x 3	880030	036458	0.302	0.540	3.000	2.120
¼ x 3-½	880035	036459	0.302	0.540	3.500	2.620
¼ x 4	880040	036460	0.302	0.540	4.000	3.120
¼ x 4-½	880045	036461	0.302	0.540	4.500	3.620
¼ x 5	880050	036462	0.302	0.540	5.000	4.120
¼ x 6	880060	036463	0.302	0.540	6.000	5.120
¼ x 8	880080	036464	0.302	0.540	8.000	7.120
¼ x 10	880100	236012	0.302	0.540	10.000	9.120
¼ x 12	880120	236013	0.302	0.540	12.000	11.120
⅜ x 1-½	881015	036446	0.423	0.675	1.500	0.620
⅜ x 2	881020	036466	0.423	0.675	2.000	1.120
⅜ x 2-½	881025	036467	0.423	0.675	2.500	1.620
⅜ x 3	881030	036468	0.423	0.675	3.000	2.120
⅜ x 3-½	881035	036469	0.423	0.675	3.500	2.620
⅜ x 4	881040	036470	0.423	0.675	4.000	3.120
⅜ x 4-½	881045	036471	0.423	0.675	4.500	3.620
⅜ x 5	881050	036472	0.423	0.675	5.000	4.120
⅜ x 6	881060	036473	0.423	0.675	6.000	5.120
⅜ x 8	881080	036474	0.423	0.675	8.000	7.120
½ x 1-½	882015	036447	0.526	0.840	1.500	0.440
½ x 2	882020	036475	0.526	0.840	2.000	0.940
½ x 2-½	882025	036476	0.526	0.840	2.500	1.440
½ x 3	882030	036477	0.526	0.840	3.000	1.940
½ x 3-½	882035	036478	0.526	0.840	3.500	2.440
½ x 4	882040	036479	0.526	0.840	4.000	2.940
½ x 4-½	882045	036480	0.526	0.840	4.500	3.440
½ x 5	882050	036481	0.526	0.840	5.000	3.940
½ x 5-½	882055	036445	0.526	0.840	5.500	4.440
½ x 6	882060	036456	0.526	0.840	6.000	4.940
½ x 8	882080	036457	0.526	0.840	8.000	6.940
½ x 10	882100	036458	0.526	0.840	10.000	8.940
½ x 12	882120	036459	0.526	0.840	12.000	10.940
¾ x 1-½	883015	036460	0.772	1.050	1.500	0.400
¾ x 2	883020	036461	0.722	1.050	2.000	0.900
¾ x 2-½	883025	036462	0.722	1.050	2.500	1.400
¾ x 3	883030	036463	0.722	1.050	3.000	1.900
¾ x 3-½	883035	036464	0.722	1.050	3.500	2.400
¾ x 4	883040	236012	0.722	1.050	4.000	2.900
¾ x 4-½	883045	236013	0.722	1.050	4.500	3.400
¾ x 5	883050	036446	0.722	1.050	5.000	3.900
¾ x 5-½	883055	036466	0.722	1.050	5.500	4.400
¾ x 6	883060	036467	0.722	1.050	6.000	4.900
¾ x 8	883080	036468	0.722	1.050	8.000	6.900
¾ x 10	883100	036469	0.722	1.050	10.000	8.900
¾ x 12	883120	036470	0.722	1.050	12.000	10.900



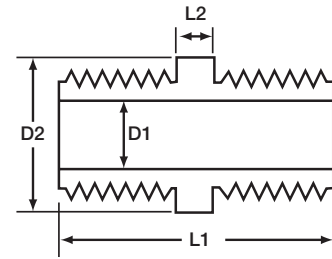
Schedule 80
NIPPLES
Standard

Imported fittings from Aliaxis.

Continued ➡

NIPPLES

Nom. Pipe Size	Xirtec		Critical Dimensions			
	Univ. Part No.	IPEX Part No.	D1	D2	L1	L2
1 x 2	884020	036471	0.936	1.315	2.000	0.640
1 x 2-½	884025	036472	0.936	1.315	2.500	1.140
1 x 3	884030	036473	0.936	1.315	3.000	1.640
1 x 3-½	884035	036474	0.936	1.315	3.500	2.140
1 x 4	884040	036447	0.936	1.315	4.000	2.640
1 x 4-½	884045	036475	0.936	1.315	4.500	3.140
1 x 5	884050	036476	0.936	1.315	5.000	3.640
1 x 5-½	884055	036477	0.936	1.315	5.500	4.140
1 x 6	884060	036478	0.936	1.315	6.000	4.640
1 x 8	884080	036479	0.936	1.315	8.000	6.640
1 x 10	884100	036480	0.936	1.315	10.000	8.640
1 x 12	884120	036481	0.936	1.315	12.000	10.640
1-¼ x 2	885020	036450	1.255	1.660	2.000	0.580
1-¼ x 2-½	885025	036516	1.255	1.660	2.500	1.080
1-¼ x 3	885030	036517	1.255	1.660	3.000	1.580
1-¼ x 3-½	885035	036518	1.255	1.660	3.500	2.080
1-¼ x 4	885040	036519	1.255	1.660	4.000	2.580
1-¼ x 4-½	885045	036520	1.255	1.660	4.500	3.080
1-¼ x 5	885050	036521	1.255	1.660	5.000	3.580
1-¼ x 6	885060	036522	1.255	1.660	6.000	4.580
1-¼ x 8	885080	036523	1.255	1.660	8.000	6.580
1-¼ x 10	885100	036524	1.255	1.660	10.000	8.580
1-¼ x 12	885120	036525	1.255	1.660	12.000	10.580
1-½ x 2	886020	036451	1.476	1.900	2.000	0.560
1-½ x 2-½	886025	036526	1.476	1.900	2.500	1.060
1-½ x 3	886030	036527	1.476	1.900	3.000	1.560
1-½ x 3-½	886035	036528	1.476	1.900	3.500	2.060
1-½ x 4	886040	036529	1.476	1.900	4.000	2.560
1-½ x 4-½	886045	036530	1.476	1.900	4.500	3.060
1-½ x 5	886050	036531	1.476	1.900	5.000	3.560
1-½ x 5-½	886055	036532	1.476	1.900	5.500	4.060
1-½ x 6	886060	036533	1.476	1.900	6.000	4.560
1-½ x 8	886080	036534	1.476	1.900	8.000	6.560
1-½ x 10	886100	036535	1.476	1.900	10.000	8.560
1-½ x 12	886120	036536	1.476	1.900	12.000	10.560
2 x 2-½	887025	036452	1.913	2.375	2.500	0.980
2 x 3	887030	036539	1.913	2.375	3.000	1.480
2 x 3-½	887035	036540	1.913	2.375	3.500	1.980
2 x 4	887040	036541	1.913	2.375	4.000	2.480
2 x 4-½	887045	036542	1.913	2.375	4.500	2.980
2 x 5	887050	036543	1.913	2.375	5.000	3.480
2 x 5-½	887055	036544	1.913	2.375	5.500	3.980
2 x 6	887060	036545	1.913	2.375	6.000	4.480
2 x 8	887080	035546	1.913	2.375	8.000	6.480
2 x 10	887100	036547	1.913	2.375	10.000	8.480
2 x 12	887120	036548	1.913	2.375	12.000	10.480
2-½ x 3	888030	036549	2.290	2.875	3.000	0.720
2-½ x 4	888040	036550	2.290	2.875	4.000	1.720
2-½ x 5	888050	036272	2.290	2.875	5.000	1.800
2-½ x 6	888060	036551	2.290	2.875	6.000	3.720
2-½ x 8	888080	036552	2.290	2.875	8.000	5.720
2-½ x 10	888100	036276	2.290	2.875	10.000	7.150
2-½ x 12	888120	036553	2.290	2.875	12.000	9.720

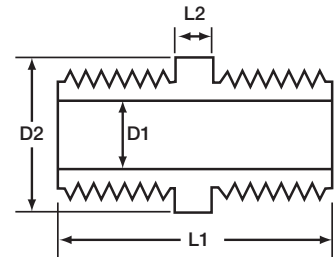


Schedule 80
NIPPLES
Standard Cont.

NIPPLES

Nom. Pipe Size	Xirtec		Critical Dimensions			
	Univ. Part No.	IPEX Part No.	D1	D2	L1	L2
3 x 3	889030	036554	2.864	3.500	3.000	0.600
3 x 4	889040	036555	2.864	3.500	4.000	1.600
3 x 5	889050	035556	2.864	3.500	5.000	2.600
3 x 6	889060	035557	2.864	3.500	6.000	3.600
3 x 8	889080	036558	2.864	3.500	8.000	5.600
3 x 10	889100	036559	2.864	3.500	10.000	7.600
3 x 12	889120	035560	2.864	3.500	12.000	9.600
4 x 4	890040	036562	3.786	4.500	4.000	1.400
4 x 5	890050	036563	3.786	4.500	5.000	2.400
4 x 6	890060	036564	3.786	4.500	6.000	3.400
4 x 8	890080	036565	3.786	4.500	8.000	5.400
4 x 10	890100	036566	3.786	4.500	10.000	7.400
4 x 12	890120	036567	3.786	4.500	12.000	9.400

Imported fittings from Aliaxis.

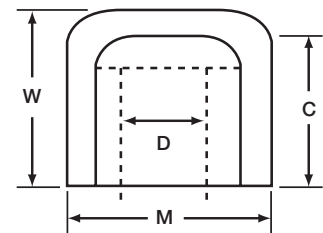


Schedule 80
NIPPLES
Standard Cont.

CAPS

Nom. Pipe Size	Xirtec		Critical Dimensions			
	Univ. Part No.	IPEX Part No.	C	D	M	W
¼	847002	036056	0.730	0.300	0.815	0.940
⅜	847003	035057	0.870	0.423	0.970	1.155
½	847005	036058	0.885	0.526	1.185	1.260
¾	847007	036059	1.000	0.722	1.400	1.360
1	847010	036060	1.125	0.936	1.750	1.580
1-¼	847012	036061	1.265	1.255	2.090	1.730
1-½	847015	036062	1.395	1.476	2.355	1.930
2	847020	036063	1.510	1.913	2.855	2.145
2-½	847025	036064	1.780	2.290	3.525	2.635
3	847030	036065	1.885	2.864	4.180	2.850
4	847040	036066	2.285	3.786	5.250	3.335
6	847060	036067	3.055	5.709	7.585	4.825
8	847080	036068	5.630	7.565	9.685	6.495

Imported fittings from Aliaxis.

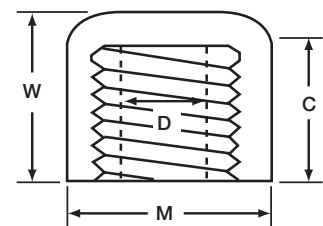


Schedule 80
CAPS
Soc Cap

CAPS

Nom. Pipe Size	Xirtec		Critical Dimensions			
	Univ. Part No.	IPEX Part No.	C	D	M	W
¼	848002	036072	0.645	0.300	0.905	0.940
⅜	848003	036073	0.750	0.423	0.970	0.905
½	848005	036074	0.875	0.526	1.295	1.185
¾	848007	036075	1.000	0.722	1.520	1.255
1	848010	036076	1.125	0.936	1.830	1.490
1-¼	848012	036077	1.250	1.255	2.235	1.500
1-½	848015	036078	1.375	1.476	2.490	1.545
2	848020	036079	1.500	1.913	3.040	1.710
2-½	848025	036080	1.750	2.290	3.625	2.440
3	848030	036081	1.875	2.864	4.305	2.520
4	848040	036082	2.250	3.786	5.470	2.880

Imported fittings from Aliaxis.



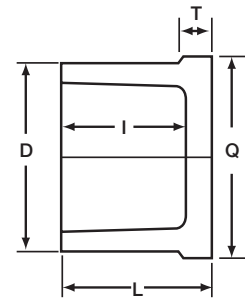
Schedule 80
CAPS
FPT Cap



PLUGS

Nom. Pipe Size	Xirtec		Critical Dimensions				
	Univ. Part No.	IPEX Part No.	D	L	T	I	Q
2	849020	036585	2.375	1.875	0.380	1.520	2.565

Imported fittings from Aliaxis.

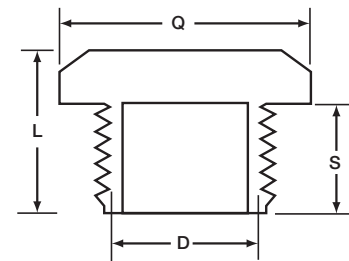


Schedule 80
PLUGS
Spig Plug

PLUGS

Nom. Pipe Size	Xirtec		Critical Dimensions			
	Univ. Part No.	IPEX Part No.	D	L	Q	S
¼	850002	036568	0.540	0.725	0.635	0.545
⅜	850003	035569	0.675	0.760	0.800	0.565
½	850005	036570	0.840	0.975	1.120	0.720
¾	850007	036571	1.050	1.050	1.375	0.750
1	850010	036572	1.315	1.205	1.690	0.905
1-¼	850012	036573	1.660	1.435	2.055	1.005
1-½	850015	036574	1.900	1.460	2.315	1.025
2	850020	036575	2.375	1.440	2.780	1.010
2-½	850025	036576	2.875	1.970	3.120	1.570
3	850030	036577	3.500	2.000	3.740	1.630
4	850040	036578	4.500	2.090	4.730	1.710
6	850060	036579	6.625	2.085	6.850	1.565

Imported fittings from Aliaxis.



Schedule 80
PLUGS
MPT Plug

Disclaimer

This brochure has been compiled by Paling Industries Sdn Bhd ("the company") to promote better understanding of the technical aspects of the Company's products to assist users in obtaining from them the best possible performance. The brochure is supplied subject to acknowledgment of the following conditions:

i) The brochure is protected by Copyright and may not be copied or reproduced in any form or by any means in whole or in part without prior consent in writing by the Company. ii) Product specifications, usage data and advisory information may change from time to time with advances in research and field experience. The Company reserves the right to make such changes at any time without notice. iii) Correct usage of the Company's products involve engineering judgements which cannot be properly made without full knowledge of all the conditions pertaining to each specific installation. The Company expressly disclaims all and any liability to any person done by any such person in reliance whether whole or partial upon the whole or any part of the contents of this brochure. iv) No offer to trade, nor any conditions of trading, are expressed or implied by the issue or content of this brochure. v) Nothing herein shall override the Company's conditions of Sale, which may be obtained from the Registered Office or any Sales Office of the Company. vi) This brochure is and shall remain the property of the Company, and shall be surrendered on demand to the Company.



The Water Delivery System

PALING INDUSTRIES SDN BHD (11039 V)

Lot 12, Jalan Perusahaan 4, 68100 Batu Caves, Selangor Darul Ehsan, Malaysia.

Tel: 603 - 6189 8333 (General) / 603 - 6189 6389 (Sales)

Fax: +603 6188 3810

Email: sales@paling.com.my

Website: www.paling.com.my

Distributed by: